

Assembly Instructions

P/N: 800-60108-01

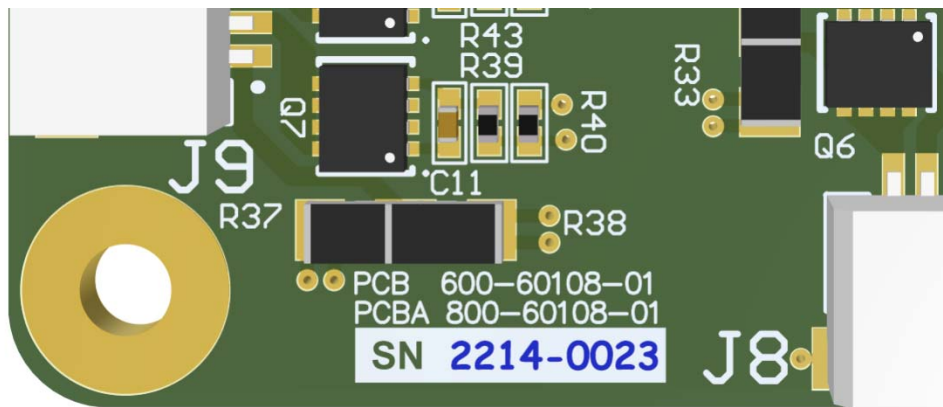
Description: PCBA, MK2.6 HAT

Revision: 1

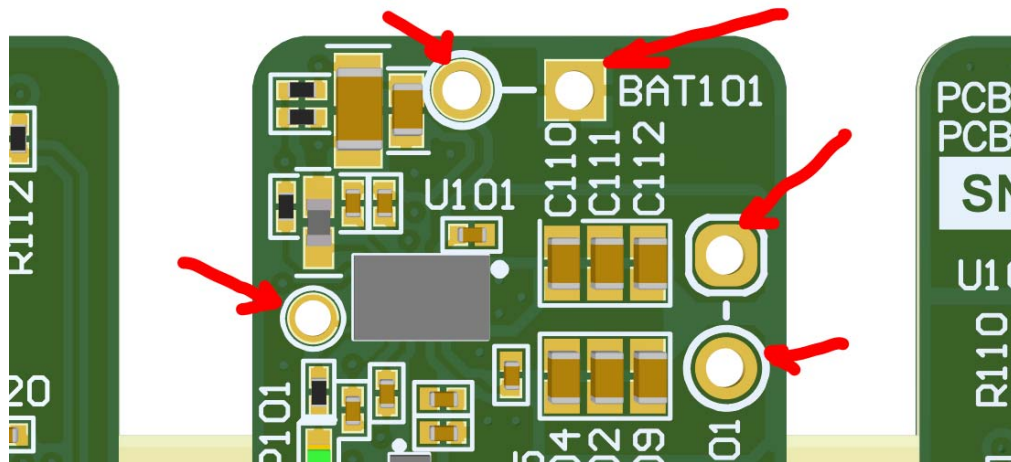
Date: 21 APRIL 2022

Procedure:

- 1) RoHS process to be used. Double sided assembly.
- 2) Serialize the production run with permanent contrasting ink or waterproof sticker on "SN" white box. See picture below.
- 3) Serial numbers should be in the format YYWW-NNNN, where YY=two digit year, WW=two digit week and NNNN=lot serial, from 0001 to number of boards in lot. Example 2214-0023.



- 4) Keep test point holes free of solder (any metalized hole without a component or paste stencil opening should be clear of solder). Example below:



- 5) Parts marked as "DNP" (do not populate) or not present in the BOM are not to be purchased nor assembled.

- 6) Any deviations from BOM manufacturer part number are to be pre-approved by us.
- 7) All unused parts are to be returned with assembled boards.
- 8) Assembled boards to be supplied in individual ESD bags.
- 9) Top and bottom view of assembled board, for reference only, are shown below. Solder mask color and finish might be different. All parts, including DNP parts, are shown, so assembly may be slightly different.

